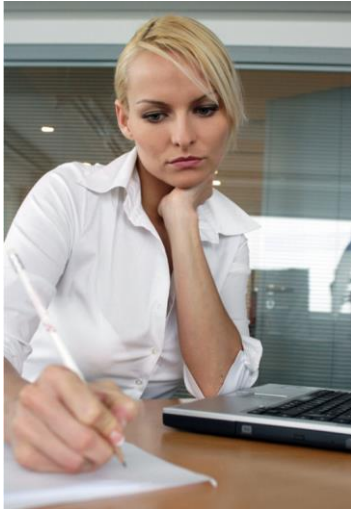


Word interface for Microsoft® Dynamics CRM

Microsoft® Partner
 Gold Customer Relationship Management
 Silver Midmarket Solution Provider
 Silver Server Platform
 Silver Hosting



a special solution on the base of Microsoft® Dynamics CRM

With the Word interface for Microsoft Dynamics CRM you could print your correspondence comfortably and directly from the Microsoft Dynamics CRM Application namely for anybody, also user-defined entities. In an easy way you can create yourselves individual Word templates according to your company requirements and integrate this into the Word interface for further global use

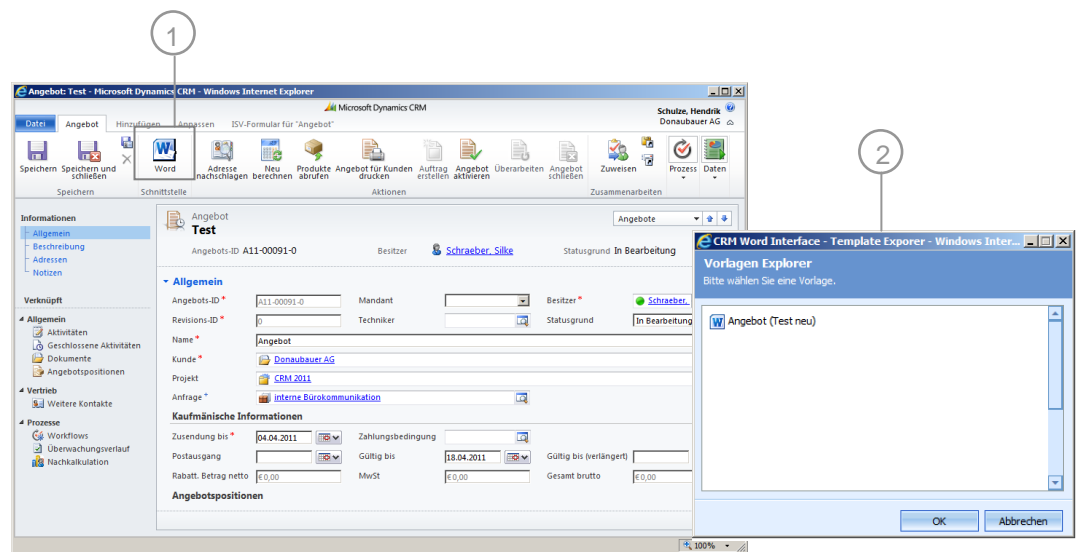
for all users. The required templates are created one-time by an administrator. You enter all relevant data on the desired data record as usual in Microsoft Dynamics CRM and reach at the touch of the button directly to the dialog of the Word interface. Select from the templates the corresponding one depending on which customer letter you would like to generate.

You receive your finished document directly in Word which you completely handle further or print directly and can send to the customer.

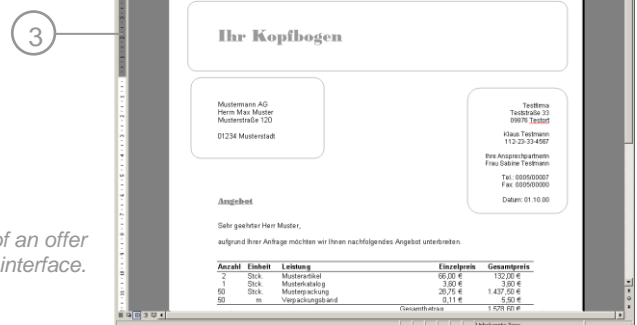
1 Generate your required Word document directly from the suitable data record.

2 Select in the template explorer your desired, individually created template.

3 Your finished letter is opening as a Word document and now can handled or sent directly to the customer.



Exemplary view of an offer data record with integrated Word interface.



Exemplary view of an offer generated by the Word interface.

Word interface for Microsoft® Dynamics CRM

Microsoft® Partner
Gold Customer Relationship Management
Silver Midmarket Solution Provider
Silver Server Platform
Silver Hosting



The Word interface for Microsoft Dynamics CRM exists in two different versions. In the following you can find a description of the standard version and enterprise version with the suitable licence model.

Word interface standard

In the Word interface standard you can create an individual template per entity. On their base the desired information will transmit into the Word document and can be printed out directly for the customer. Define a global template per entity and permit every Microsoft Dynamics CRM User a comfortable construction of the correspondence with the customers.

Word interface enterprise

The Word interface enterprise offers you the possibility to create so many individual templates per entity as it your company needs require. You are not limited on one template, but can react fast if your demands for the correspondence with your customers change or extend. Therefore you can accommodate to individual co-worker's standards with the enterprise version, because no template restriction exists.

contact:

Donaubauer Aktiengesellschaft
Wurzener Straße 10
04774 Dahlen/Sa.

Tel.: +49 (34361) 826-0
Fax: +49 (34361) 826-25
e-mail: sales@donaubauer.com
<http://www.donaubauer.com>
<http://www.crmwordschnittstelle.de>

licencing

The licencing of the Word interface occurs per CRM organisation.

| standard version | enterprise version |
|--|--|
| On Premise price: 638.00 € * | On Premise price: 1,277.00 € * |
| software support (after 2 nd year): 158 € * | software support (after 2 nd year): 317 € * |
| On Demand price: monthly 17.72 € * | On Demand price: monthly 35.47 € * |

* plus VAT / On Demand: minimum term of 12 months, annually extension, period of notice of 3 months from end

Microsoft® Partner
Gold Customer Relationship Management
Silver Midmarket Solution Provider
Silver Server Platform
Silver Hosting

DONAUBAUER
AKTIENGESELLSCHAFT

The Donaubauer AG is Microsoft Gold Certified Partner and Microsoft Business Solutions Partner. You find further information about us and our Word interface for MS CRM in the Internet: <http://www.donaubauer.com> and <http://www.crmwordschnittstelle.de>